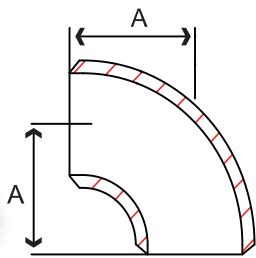


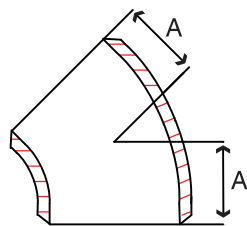
**Fig. S2014LE & S2016LE - 90° Elbow Long Radius**

Size in	Part Number		A in	Weight lb
	304 / L	316 / L		
1/2	S2014LE004	S2016LE004	1.50	0.1
3/4	S2014LE006	S2016LE006	1.50	0.1
1	S2014LE010	S2016LE010	1.50	0.1
1-1/4	S2014LE012	S2016LE012	1.88	0.2
1-1/2	S2014LE014	S2016LE014	2.25	0.3
2	S2014LE020	S2016LE020	3.00	0.6
2-1/2	S2014LE024	S2016LE024	3.75	1.2
3	S2014LE030	S2016LE030	4.50	1.7
4	S2014LE040	S2016LE040	6.00	3.0
5	S2014LE050	S2016LE050	7.50	6.1
6	S2014LE060	S2016LE060	9.00	8.9
8	S2014LE080	S2016LE080	12.00	15.4
10	S2014LE100	S2016LE100	15.00	29.2
12	S2014LE120	S2016LE120	16.00	52.0



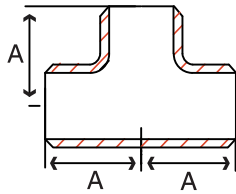
**Fig. S2014E & S2016E - 90° Elbow Short Radius**

Size in	Part Number		A in	Weight lb
	304 / L	316 / L		
1	S2014E 010	S2016E 010	1.50	0.1
1-1/4	S2014E 012	S2016E 012	1.88	0.2
1-1/2	S2014E 014	S2016E 014	2.25	0.3
2	S2014E 020	S2016E 020	3.00	0.6
2-1/2	S2014E 024	S2016E 024	3.75	1.2
3	S2014E 030	S2016E 030	4.50	1.7
4	S2014E 040	S2016E 040	6.00	3.0
5	S2014E 050	S2016E 050	7.50	6.1
6	S2014E 060	S2016E 060	9.00	8.9
8	S2014E 080	S2016E 080	12.00	15.4
10	S2014E 100	S2016E 100	15.00	29.2
12	S2014E 120	S2016E 120	16.00	52.0



**Fig. S2014F & S2016F - 45° Elbow**

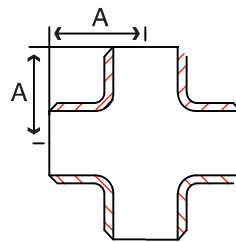
Size in	Part Number		A in	Weight lb
	304 / L	316 / L		
1/2	S2014F 004	S2016F 004	0.62	0.07
3/4	S2014F 006	S2016F 006	0.44	0.07
1	S2014F 010	S2016F 010	0.86	0.1
1-1/4	S2014F 012	S2016F 012	1.00	0.2
1-1/2	S2014F 014	S2016F 014	1.12	0.3
2	S2014F 020	S2016F 020	1.36	0.5
2-1/2	S2014F 024	S2016F 024	1.75	0.9
3	S2014F 030	S2016F 030	2.00	1.3
4	S2014F 040	S2016F 040	2.50	2.3
5	S2014F 050	S2016F 050	3.12	4.0
6	S2014F 060	S2016F 060	3.75	5.7
8	S2014F 080	S2016F 080	5.00	11.1
10	S2014F 100	S2016F 100	6.25	19.3
12	S2014F 120	S2016F 120	7.50	29.8



**Fig. S2014T & S2016T - Tee**

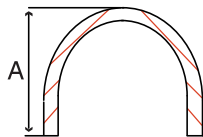
Size in	Part Number		A in	Weight lb
	304 / L	316 / L		
1/2	S2014T 004	S2016T 004	1.00	0.2
3/4	S2014T 006	S2016T 006	1.125	0.3
1	S2014T 010	S2016T 010	1.50	0.5
1-1/4	S2014T 012	S2016T 012	1.68	1.1
1-1/2	S2014T 014	S2016T 014	2.25	1.6
2	S2014T 020	S2016T 020	2.50	1.7
2-1/2	S2014T 024	S2016T 024	3.00	2.8
3	S2014T 030	S2016T 030	3.38	3.8
4	S2014T 040	S2016T 040	4.12	5.8
5	S2014T 050	S2016T 050	4.88	10.3
6	S2014T 060	S2016T 060	5.520	14.6
8	S2014T 080	S2016T 080	7.00	24.0
10	S2014T 100	S2016T 100	8.6	40.0
12	S2014T 120	S2016T 120	10.00	56.0

WELDED



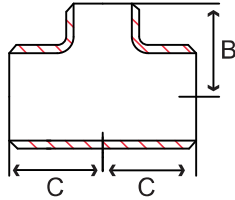
**Fig. S2014X & S2016X - Cross**

Size in	Part Number		A in	Weight lb
	304 / L	316 / L		
1-1/2	S2014X 014	S2016X 014	2.25	1.7
2	S2014X 020	S2016X 020	2.50	2.1
3	S2014X 030	S2016X 030	3.38	4.4
4	S2014X 040	S2016X 040	4.12	8.7
6	S2014X 060	S2016X 060	5.52	20.4



**Fig. S2014C & S2016C - Cap**

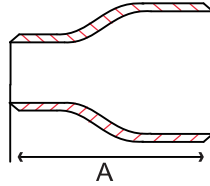
Size in	Part Number		A in	Weight lb
	304 / L	316 / L		
1/2	S2014C 004	S2016C 004	1.00	0.07
3/4	S2014C 006	S2016C 006	1.00	0.1
1	S2014C 010	S2016C 010	1.50	0.1
1-1/4	S2014C 012	S2016C 012	1.50	0.2
1-1/2	S2014C 014	S2016C 014	1.50	0.2
2	S2014C 020	S2016C 020	15.0	0.4
2-1/2	S2014C 024	S2016C 024	1.50	0.5
3	S2014C 030	S2016C 030	2.00	0.8
4	S2014C 040	S2016C 040	2.50	1.2
5	S2014C 050	S2016C 050	3.00	2.4
6	S2014C 060	S2016C 060	3.50	3.1
8	S2014C 080	S2016C 080	4.00	5.4
10	S2014C 100	S2016C 100	5.00	9.9
12	S2014C 120	S2016C 120	6.00	14.7



**Fig. S2014RT & S2016RT - Reducing Tee**

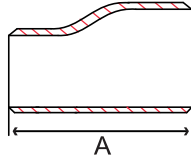
Size in	Part Number		A in	C in	Weight lb
	304 / L	316 / L			
3/4 x 1/2	S2014RT006004	S2016RT006004	1-1/8	1-1/8	0.2
1 x 1/2	S2014RT010004	S2016RT010004	1-1/2	1-1/2	0.5
1 x 3/4	S2014RT010006	S2016RT010006	1-1/2	1-1/2	0.5
1-1/4 x 3/4	S2014RT012006	S2016RT012006	1-7/8	1-7/8	0.9
1-1/4 x 1	S2014RT012010	S2016RT012010	1-7/8	1-7/8	0.9
1-1/2 x 1/2	S2014RT014004	S2016RT014004	2-1/4	2-1/4	1.2
1-1/2 x 3/4	S2014RT014006	S2016RT014006	2-1/4	2-1/4	1.2
1-1/2 x 1	S2014RT014010	S2016RT014010	2-1/4	2-1/4	1.3
1-1/2 x 1-1/4	S2014RT014012	S2016RT014012	2-1/4	2-1/4	1.3
2 x 1/2	S2014RT020004	S2016RT020004	2-1/2		
2 x 3/4	S2014RT020006	S2016RT020006	2-1/2	1-3/4	1.5
2 x 1	S2014RT020010	S2016RT020010	2-1/2	2	1.6
2 x 1-1/4	S2014RT020012	S2016RT020012	2-1/2	2-1/4	1.6
2 x 1-1/2	S2014RT020014	S2016RT020014	2-1/2	2-3/8	1.6
2-1/2 x 1	S2014RT024010	S2016RT024010	3	2-1/4	2.6
2-1/2 x 1-1/2	S2014RT024014	S2016RT024014	3	2-5/8	2.7
2-1/2 x 2	S2014RT024020	S2016RT024020	3	2-3/4	2.7
3 x 1	S2014RT030010	S2016RT030010	3-3/8	2-5/8	3.2
3 x 1-1/4	S2014RT030012	S2016RT030012	3-3/8	2-3/4	3.3
3 x 1-1/2	S2014RT030014	S2016RT030014	3-3/8	2-7/8	3.3
3 x 2	S2014RT030020	S2016RT030020	3-3/8	3	3.4
3 x 2-1/2	S2014RT030024	S2016RT030024	3-3/8	3-1/4	3.5
4 x 1-1/2	S2014RT040014	S2016RT040014	4-1/8	3-3/8	6.4
4 x 2	S2014RT040020	S2016RT040020	4-1/8	3-1/2	6.4
4 x 2-1/2	S2014RT040024	S2016RT040024	4-1/8	3-3/4	6.5
4 x 3	S2014RT040030	S2016RT040030	4-1/8	3-7/8	6.7
5 x 3	S2014RT050030	S2016RT050030	4-7/8	4-3/8	11.5
5 x 4	S2014RT050040	S2016RT050040	4-7/8	5	12.1
6 x 2	S2014RT060020	S2016RT060020	5-5/8		
6 x 2-1/2	S2014RT060024	S2016RT060024	5-5/8	4-3/4	14.9
6 x 3	S2014RT060030	S2016RT060030	5-5/8	4-7/8	15.1
6 x 4	S2014RT060040	S2016RT060040	5-5/8	5-1/8	15.6
8 x 3	S2014RT080030	S2016RT080030	7	6	29.0
8 x 4	S2014RT080040	S2016RT080040	7	6-1/8	29.6
8 x 6	S2014RT080060	S2016RT080060	7	6-5/8	31.0
10 x 4	S2014RT100040	S2016RT100040	8-1/2	7-1/4	50.1
10 x 6	S2014RT100060	S2016RT100060	8-1/2	7-5/8	51.9
10 x 8	S2014RT100080	S2016RT100080	8-1/2	8	53.1
12 x 6	S2014RT120060	S2016RT120060	10	8-5/8	74.8
12 x 8	S2014RT120080	S2016RT120080	10	9	76.5
12 x 10	S2014RT120100	S2016RT120100	10	9-1/2	78.3

W  
E  
L  
D



**Fig. S2014CR & S2016CR - Concentric Reducer**

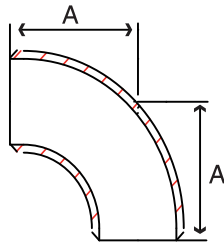
Size in	Part Number		A in	Weight lb
	304 / L	316 / L		
3/4 x 1/2	S2014CR006004	S2016CR006004	1-1/2	0.2
1 x 1/2	S2014CR010004	S2016CR010004	2	0.2
1 x 3/4	S2014CR010006	S2016CR010006	2	0.2
1-1/4 x 1/2	S2014CR012004	S2016CR012004	2	0.3
1-1/4 x 3/4	S2014CR012006	S2016CR012006	2	0.3
1-1/4 x 1	S2014CR012010	S2016CR012010	2	0.3
1-1/2 x 1/2	S2014CR014004	S2016CR014004	2-1/2	0.3
1-1/2 x 3/4	S2014CR014006	S2016CR014006	2-1/2	0.3
1-1/2 x 1	S2014CR014010	S2016CR014010	2-1/2	0.4
1-1/2 x 1-1/4	S2014CR014012	S2016CR014012	2-1/2	0.4
2 x 1/2	S2014CR020004	S2016CR020004	3	0.5
2 x 3/4	S2014CR020006	S2016CR020006	3	0.5
2 x 1	S2014CR020010	S2016CR020010	3	0.6
2 x 1-1/4	S2014CR020012	S2016CR020012	3	0.6
2 x 1-1/2	S2014CR020014	S2016CR020014	3	0.6
2-1/2 x 1	S2014CR024010	S2016CR024010	3-1/2	0.8
2-1/2 x 1-1/4	S2014CR024012	S2016CR024012	3-1/2	0.9
2-1/2 x 1-1/2	S2014CR024014	S2016CR024014	3-1/2	0.9
2-1/2 x 2	S2014CR024020	S2016CR024020	3-1/2	1.0
3 x 1	S2014CR030010	S2016CR030010	3-1/2	1.0
3 x 1-1/4	S2014CR030012	S2016CR030012	3-1/2	1.0
3 x 1-1/2	S2014CR030014	S2016CR030014	3-1/2	1.1
3 x 2	S2014CR030020	S2016CR030020	3-1/2	1.2
3 x 2-1/2	S2014CR030024	S2016CR030024	3-1/2	1.3
4 x 1-1/2	S2014CR040014	S2016CR040014	4	1.7
4 x 2	S2014CR040020	S2016CR040020	4	1.5
4 x 2-1/2	S2014CR040024	S2016CR040024	4	1.7
4 x 3	S2014CR040030	S2016CR040030	4	1.8
5 x 3	S2014CR050030	S2016CR050030	5	3.0
5 x 4	S2014CR050040	S2016CR050040	5	3.2
6 x 2	S2014CR060020	S2016CR060020	5-1/2	3.2
6 x 2-1/2	S2014CR060024	S2016CR060024	5-1/2	3.2
6 x 3	S2014CR060030	S2016CR060030	5-1/2	3.3
6 x 4	S2014CR060040	S2016CR060040	5-1/2	4.2
6 x 5	S2014CR060050	S2016CR060050	5-1/2	4.3
8 x 3	S2014CR080030	S2016CR080030	6	4.4
8 x 4	S2014CR080040	S2016CR080040	6	6.6
8 x 6	S2014CR080060	S2016CR080060	6	7.0
10 x 4	S2014CR100040	S2016CR100040	7	10.4
10 x 6	S2014CR100060	S2016CR100060	7	11.0
10 x 8	S2014CR100080	S2016CR100080	7	11.4
12 x 6	S2014CR120060	S2016CR120060	8	16.3
12 x 8	S2014CR120080	S2016CR120080	8	16.9
12 x 10	S2014CR120100	S2016CR120100	8	17.6



W  
E  
L  
D

**Fig. S2014ER & S2016ER - Eccentric Reducer**

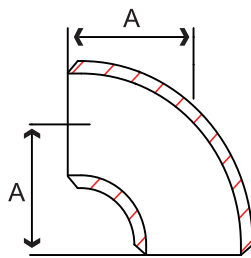
Size in	Part Number		A in	Weight lb
	304 / L	316 / L		
3/4 x 1/2	S2014ER006004	S2016ER006004	1-1/2	0.2
1 x 1/2	S2014ER010004	S2016ER010004	2	0.2
1 x 3/4	S2014ER010006	S2016ER010006	2	0.2
1-1/4 x 3/4	S2014ER012006	S2016ER012006	2	0.3
1-1/4 x 1	S2014ER012010	S2016ER012010	2	0.3
1-1/2 x 1/2	S2014ER014004	S2016ER014004	2-1/2	0.3
1-1/2 x 3/4	S2014ER014006	S2016ER014006	2-1/2	0.3
1-1/2 x 1	S2014ER014010	S2016ER014010	2-1/2	0.4
1-1/2 x 1-1/4	S2014ER014012	S2016ER014012	2-1/2	0.4
2 x 1/2	S2014ER020004	S2016ER020004	3	0.5
2 x 3/4	S2014ER020006	S2016ER020006	3	0.5
2 x 1	S2014ER020010	S2016ER020010	3	0.6
2 x 1-1/4	S2014ER020012	S2016ER020012	3	0.6
2 x 1-1/2	S2014ER020014	S2016ER020014	3	0.6
2-1/2 x 1	S2014ER024010	S2016ER024010	3-1/2	0.8
2-1/2 x 1-1/2	S2014ER024014	S2016ER024014	3-1/2	0.9
2-1/2 x 2	S2014ER024020	S2016ER024020	3-1/2	1.0
3 x 1	S2014ER030010	S2016ER030010	3-1/2	1.0
3 x 1-1/4	S2014ER030012	S2016ER030012	3-1/2	1.0
3 x 1-1/2	S2014ER030014	S2016ER030014	3-1/2	1.1
3 x 2	S2014ER030020	S2016ER030020	3-1/2	1.2
3 x 2-1/2	S2014ER030024	S2016ER030024	3-1/2	1.3
4 x 1-1/2	S2014ER040014	S2016ER040014	4	1.7
4 x 2	S2014ER040020	S2016ER040020	4	1.5
4 x 2-1/2	S2014ER040024	S2016ER040024	4	1.7
4 x 3	S2014ER040030	S2016ER040030	4	1.8
5 x 3	S2014ER050030	S2016ER050030	5	3.0
5 x 4	S2014ER050040	S2016ER050040	5	3.2
6 x 2	S2014ER060020	S2016ER060020	5-1/2	3.2
6 x 2-1/2	S2014ER060024	S2016ER060024	5-1/2	3.2
6 x 3	S2014ER060030	S2016ER060030	5-1/2	3.3
6 x 4	S2014ER060040	S2016ER060040	5-1/2	4.2
6 x 5	S2014ER060050	S2016ER060050	5-1/2	4.3
8 x 3	S2014ER080030	S2016ER080030	6	4.4
8 x 4	S2014ER080040	S2016ER080040	6	6.6
8 x 6	S2014ER080060	S2016ER080060	6	7.0
10 x 6	S2014ER100060	S2016ER100060	7	11.0
10 x 8	S2014ER100080	S2016ER100080	7	11.4
12 x 6	S2014ER120060	S2016ER120060	8	16.3
12 x 8	S2014ER120080	S2016ER120080	8	16.9
12 x 10	S2014ER120100	S2016ER120100	8	17.6



**Fig. S2044LE & S2046LE - 90° Elbow Long Radius**

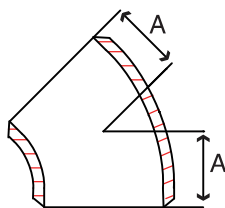
Size in	Part Number		A in	Weight lb
	304 / L	316 / L		
1/2	S2044LE004	S2046LE004	1.50	0.1
3/4	S2044LE006	S2046LE006	1.50	0.1
1	S2044LE010	S2046LE010	1.50	0.2
1-1/4	S2044LE012	S2046LE012	1.88	0.4
1-1/2	S2044LE014	S2046LE014	2.25	0.6
2	S2044LE020	S2046LE020	3.00	1.0
2-1/2	S2044LE024	S2046LE024	3.75	1.8
3	S2044LE030	S2046LE030	4.50	2.6
4	S2044LE040	S2046LE040	6.00	4.6
5	S2044LE050	S2046LE050	7.50	8.0
6	S2044LE060	S2046LE060	9.00	11.5
8	S2044LE080	S2046LE080	12.00	22.0
10	S2044LE100	S2046LE100	15.00	38.6
12	S2044LE120	S2046LE120	16.00	59.5

WELDED



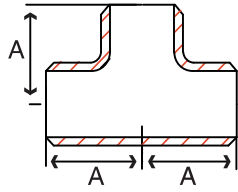
**Fig. S2044E & S2046E - 90° Elbow Short Radius**

Size in	Part Number		A in	Weight lb
	304 / L	316 / L		
1	S2044E 010	S2046E 010	1.00	0.1
1-1/4	S2044E 012	S2046E 012	1.25	0.3
1-1/2	S2044E 014	S2046E 014	1.50	0.4
2	S2044E 020	S2046E 020	2.00	0.7
2-1/2	S2044E 024	S2046E 024	2.50	1.2
3	S2044E 030	S2046E 030	3.00	1.7
4	S2044E 040	S2046E 040	4.00	3.0
5	S2044E 050	S2046E 050	5.00	5.2
6	S2044E 060	S2046E 060	6.00	8.2
8	S2044E 080	S2046E 080	8.00	14.2



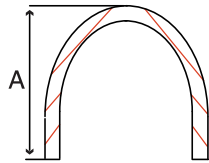
**Fig. S2044F & S2046F - 45° Elbow**

Size in	Part Number		A in	Weight lb
	304 / L	316 / L		
1/2	S2044F 004	S2046F 004	0.62	0.09
3/4	S2044F 006	S2046F 006	0.44	0.09
1	S2044F 010	S2046F 010	0.86	0.1
1-1/4	S2044F 012	S2046F 012	1.00	0.2
1-1/2	S2044F 014	S2046F 014	1.12	0.4
2	S2044F 020	S2046F 020	1.36	0.7
2-1/2	S2044F 024	S2046F 024	1.75	1.4
3	S2044F 030	S2046F 030	2.00	2.3
4	S2044F 040	S2046F 040	2.50	4.4
5	S2044F 050	S2046F 050	3.12	7.5
6	S2044F 060	S2046F 060	3.75	11.8
8	S2044F 080	S2046F 080	5.00	23.5
10	S2044F 100	S2046F 100	6.25	41.8
12	S2044F 120	S2046F 120	7.50	61.5



**Fig. S2044T & S2046T - Tee**

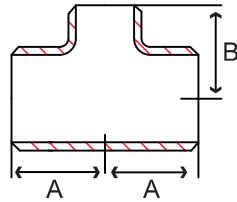
Size in	Part Number		A in	Weight lb
	304 / L	316 / L		
1/2	S2044T 004	S2046T 004	1.00	0.3
3/4	S2044T 006	S2046T 006	1.125	0.4
1	S2044T 010	S2046T 010	1.50	0.6
1-1/4	S2044T 012	S2046T 012	1.68	1.1
1-1/2	S2044T 014	S2046T 014	2.25	1.6
2	S2044T 020	S2046T 020	2.50	4.1
2-1/2	S2044T 024	S2046T 024	3.00	6.3
3	S2044T 030	S2046T 030	3.38	8.4
4	S2044T 040	S2046T 040	4.12	13.2
5	S2044T 050	S2046T 050	4.88	21.9
6	S2044T 060	S2046T 060	5.520	34.6
8	S2044T 080	S2046T 080	7.00	61.0
10	S2044T 100	S2046T 100	8.6	89.0
12	S2044T 120	S2046T 120	10.00	145.0



**Fig. S2044C & S2046C - Cap**

Size in	Part Number		A in	Weight lb
	304 / L	316 / L		
1/2	S2044C 004	S2046C 004	1.00	0.07
3/4	S2044C 006	S2046C 006	1.00	0.1
1	S2044C 010	S2046C 010	1.50	0.2
1-1/4	S2044C 012	S2046C 012	1.50	0.3
1-1/2	S2044C 014	S2046C 014	1.50	0.3
2	S2044C 020	S2046C 020	15.0	0.5
2-1/2	S2044C 024	S2046C 024	1.50	0.8
3	S2044C 030	S2046C 030	2.00	1.4
4	S2044C 040	S2046C 040	2.50	2.5
5	S2044C 050	S2046C 050	3.00	4.1
6	S2044C 060	S2046C 060	3.50	6.4
8	S2044C 080	S2046C 080	4.00	11.2
10	S2044C 100	S2046C 100	5.00	20.0
12	S2044C 120	S2046C 120	6.00	35.4



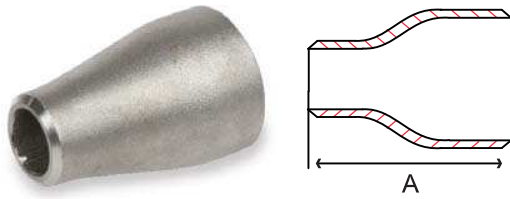


**Fig. S2044RT & S2046RT - Reducing Tee**

Size in	Part Number		A in	B in	Weight lb
	304 / L	316 / L			
3/4 x 1/2	S2044RT006004	S2046RT006004	1-1/8	1-1/8	0.3
1 x 1/2	S2044RT010004	S2046RT010004	1-1/2	1-1/2	0.5
1 x 3/4	S2044RT010006	S2046RT010006	1-1/2	1-1/2	0.5
1-1/4 x 3/4	S2044RT012006	S2046RT012006	1-7/8	1-7/8	1.1
1-1/4 x 1	S2044RT012010	S2046RT012010	1-7/8	1-7/8	1.1
1-1/2 x 1/2	S2044RT014004	S2046RT014004	2-1/4	2-1/4	1.6
1-1/2 x 3/4	S2044RT014006	S2046RT014006	2-1/4	2-1/4	1.6
1-1/2 x 1	S2044RT014010	S2046RT014010	2-1/4	2-1/4	1.6
1-1/2 x 1-1/4	S2044RT014012	S2046RT014012	2-1/4	2-1/4	1.7
2 x 1/2	S2044RT020004	S2046RT020004	2-1/2	1-3/4	2.4
2 x 3/4	S2044RT020006	S2046RT020006	2-1/2	1-3/4	2.4
2 x 1	S2044RT020010	S2046RT020010	2-1/2	2	2.4
2 x 1-1/4	S2044RT020012	S2046RT020012	2-1/2	2-1/4	2.4
2 x 1-1/2	S2044RT020014	S2046RT020014	2-1/2	2-3/8	2.5
2-1/2 x 1	S2044RT024010	S2046RT024010	3	2-1/4	4.1
2-1/2 x 1-1/2	S2044RT024014	S2046RT024014	3	2-5/8	4.2
2-1/2 x 2	S2044RT024020	S2046RT024020	3	2-3/4	4.3
3 x 1	S2044RT030010	S2046RT030010	3-3/8	2-5/8	6.1
3 x 1-1/4	S2044RT030012	S2046RT030012	3-3/8	2-3/4	6.2
3 x 1-1/2	S2044RT030014	S2046RT030014	3-3/8	2-7/8	6.2
3 x 2	S2044RT030020	S2046RT030020	3-3/8	3	6.4
3 x 2-1/2	S2044RT030024	S2046RT030024	3-3/8	3-1/4	6.5
4 x 1-1/2	S2044RT040014	S2046RT040014	4-1/8	3-3/8	9.7
4 x 2	S2044RT040020	S2046RT040020	4-1/8	3-1/2	9.8
4 x 2-1/2	S2044RT040024	S2046RT040024	4-1/8	3-3/4	10.0
4 x 3	S2044RT040030	S2046RT040030	4-1/8	3-7/8	10.2
5 x 3	S2044RT050030	S2046RT050030	4-7/8	4-3/8	17.8
5 x 4	S2044RT050040	S2046RT050040	4-7/8	5	18.6
6 x 2	S2044RT060020	S2046RT060020	5-5/8	4-3/4	20.3
6 x 2-1/2	S2044RT060024	S2046RT060024	5-5/8	4-3/4	20.3
6 x 3	S2044RT060030	S2046RT060030	5-5/8	4-7/8	26.3
6 x 4	S2044RT060040	S2046RT060040	5-5/8	5-1/8	21.3
6 x 5	S2044RT060050	S2046RT060050	5-5/8	5-3/8	21.8
8 x 3	S2044RT080030	S2046RT080030	7	6	38.7
8 x 4	S2044RT080040	S2046RT080040	7	6-1/8	39.6
8 x 6	S2044RT080060	S2046RT080060	7	6-5/8	41.4
10 x 4	S2044RT100040	S2046RT100040	8-1/2	7-1/4	66.3
10 x 6	S2044RT100060	S2046RT100060	8-1/2	7-5/8	68.6
10 x 8	S2044RT100080	S2046RT100080	8-1/2	8	70.2
12 x 6	S2044RT120060	S2046RT120060	10	8-5/8	118.0
12 x 8	S2044RT120080	S2046RT120080	10	9	120.0
12 x 10	S2044RT120100	S2046RT120100	10	9-1/2	123.0

WELDED





**Fig. S2044CR & S2046CR - Concentric Reducer**

Size in	Part Number		A in	Weight lb
	304 / L	316 / L		
3/4 x 1/2	S2044CR006004	S2046CR006004	1-1/2	0.3
1 x 1/2	S2044CR010004	S2046CR010004	2	0.3
1 x 3/4	S2044CR010006	S2046CR010006	2	0.3
1-1/4 x 3/4	S2044CR012006	S2046CR012006	2	0.4
1-1/4 x 1	S2044CR012010	S2046CR012010	2	0.4
1-1/2 x 1/2	S2044CR014004	S2046CR014004	2-1/2	0.5
1-1/2 x 3/4	S2044CR014006	S2046CR014006	2-1/2	0.5
1-1/2 x 1	S2044CR014010	S2046CR014010	2-1/2	0.5
1-1/2 x 1-1/4	S2044CR014012	S2046CR014012	2-1/2	0.6
2 x 1/2	S2044CR020004	S2046CR020004	3	0.8
2 x 3/4	S2044CR020006	S2046CR020006	3	0.8
2 x 1	S2044CR020010	S2046CR020010	3	0.8
2 x 1-1/4	S2044CR020012	S2046CR020012	3	0.9
2 x 1-1/2	S2044CR020014	S2046CR020014	3	0.9
2-1/2 x 1	S2044CR024010	S2046CR024010	3-1/2	1.4
2-1/2 x 1-1/4	S2044CR024012	S2046CR024012	3-1/2	1.6
2-1/2 x 1-1/2	S2044CR024014	S2046CR024014	3-1/2	1.6
2-1/2 x 2	S2044CR024020	S2046CR024020	3-1/2	1.7
3 x 1	S2044CR030010	S2046CR030010	3-1/2	1.8
3 x 1-1/4	S2044CR030012	S2046CR030012	3-1/2	1.8
3 x 1-1/2	S2044CR030014	S2046CR030014	3-1/2	2.0
3 x 2	S2044CR030020	S2046CR030020	3-1/2	2.2
3 x 2-1/2	S2044CR030024	S2046CR030024	3-1/2	2.3
4 x 1-1/2	S2044CR040014	S2046CR040014	4	3.3
4 x 2	S2044CR040020	S2046CR040020	4	3.0
4 x 2-1/2	S2044CR040024	S2046CR040024	4	3.4
4 x 3	S2044CR040030	S2046CR040030	4	3.6
5 x 3	S2044CR050030	S2046CR050030	5	6.0
5 x 4	S2044CR050040	S2046CR050040	5	6.4
6 x 2	S2044CR060020	S2046CR060020	5-1/2	6.5
6 x 2-1/2	S2044CR060024	S2046CR060024	5-1/2	6.5
6 x 3	S2044CR060030	S2046CR060030	5-1/2	8.3
6 x 4	S2044CR060040	S2046CR060040	5-1/2	8.9
6 x 5	S2044CR060050	S2046CR060050	5-1/2	8.9
8 x 3	S2044CR080030	S2046CR080030	6	9.4
8 x 4	S2044CR080040	S2046CR080040	6	14.4
8 x 6	S2044CR080060	S2046CR080060	6	15.3
10 x 4	S2044CR100040	S2046CR100040	7	23.1
10 x 6	S2044CR100060	S2046CR100060	7	24.5
10 x 8	S2044CR100080	S2046CR100080	7	25.4
12 x 6	S2044CR120060	S2046CR120060	8	34.1
12 x 8	S2044CR120080	S2046CR120080	8	35.2
12 x 10	S2044CR120100	S2046CR120100	8	36.6

W  
E  
L  
D

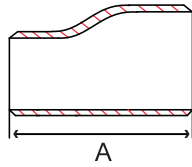


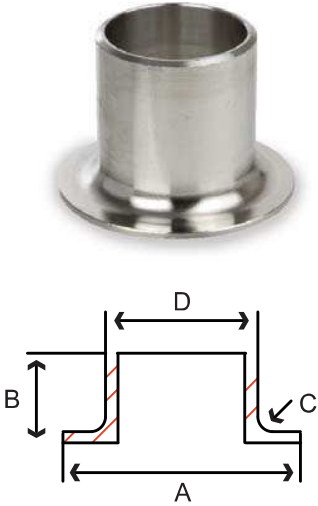
Fig. S2044ER & S2046ER - Eccentric Reducer

Size in	Part Number		A in	Weight lb
	304 / L	316 / L		
3/4 x 1/2	S2044ER006004	S2046ER006004	1-1/2	0.3
1 x 1/2	S2044ER010004	S2046ER010004	2	0.3
1 x 3/4	S2044ER010006	S2046ER010006	2	0.3
1-1/4 x 3/4	S2044ER012006	S2046ER012006	2	0.4
1-1/4 x 1	S2044ER012010	S2046ER012010	2	0.4
1-1/2 x 1/2	S2044ER014004	S2046ER014004	2-1/2	0.5
1-1/2 x 3/4	S2044ER014006	S2046ER014006	2-1/2	0.5
1-1/2 x 1	S2044ER014010	S2046ER014010	2-1/2	0.5
1-1/2 x 1-1/4	S2044ER014012	S2046ER014012	2-1/2	0.6
2 x 1/2	S2044ER020004	S2046ER020004	3	0.8
2 x 3/4	S2044ER020006	S2046ER020006	3	0.8
2 x 1	S2044ER020010	S2046ER020010	3	0.8
2 x 1-1/4	S2044ER020012	S2046ER020012	3	0.9
2 x 1-1/2	S2044ER020014	S2046ER020014	3	0.9
2-1/2 x 1	S2044ER024010	S2046ER024010	3-1/2	1.4
2-1/2 x 1-1/2	S2044ER024014	S2046ER024014	3-1/2	1.6
2-1/2 x 2	S2044ER024020	S2046ER024020	3-1/2	1.7
3 x 1	S2044ER030010	S2046ER030010	3-1/2	1.8
3 x 1-1/4	S2044ER030012	S2046ER030012	3-1/2	1.8
3 x 1-1/2	S2044ER030014	S2046ER030014	3-1/2	2.0
3 x 2	S2044ER030020	S2046ER030020	3-1/2	2.2
3 x 2-1/2	S2044ER030024	S2046ER030024	3-1/2	2.3
4 x 1-1/2	S2044ER040014	S2046ER040014	4	3.3
4 x 2	S2044ER040020	S2046ER040020	4	3.0
4 x 2-1/2	S2044ER040024	S2046ER040024	4	3.4
4 x 3	S2044ER040030	S2046ER040030	4	3.6
5 x 3	S2044ER050030	S2046ER050030	5	6.0
5 x 4	S2044ER050040	S2046ER050040	5	6.4
6 x 2	S2044ER060020	S2046ER060020	5-1/2	6.5
6 x 2-1/2	S2044ER060024	S2046ER060024	5-1/2	6.5
6 x 3	S2044ER060030	S2046ER060030	5-1/2	8.3
6 x 4	S2044ER060040	S2046ER060040	5-1/2	8.9
6 x 5	S2044ER060050	S2046ER060050	5-1/2	8.9
8 x 3	S2044ER080030	S2046ER080030	6	9.4
8 x 4	S2044ER080040	S2046ER080040	6	14.4
8 x 6	S2044ER080060	S2046ER080060	6	15.3
10 x 6	S2044ER100060	S2046ER100060	7	24.5
10 x 8	S2044ER100080	S2046ER100080	7	25.4
12 x 6	S2044ER120060	S2046ER120060	8	34.1
12 x 8	S2044ER120080	S2046ER120080	8	35.2
12 x 10	S2044ER120100	S2046ER120100	8	36.6

WELDED

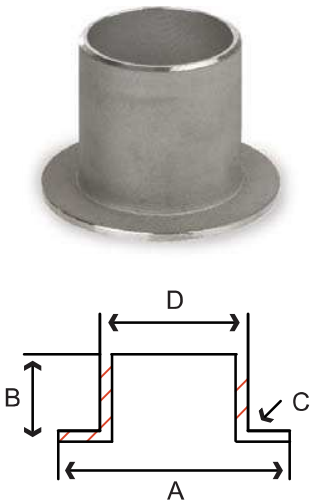
**Fig. S2214MA & S2216MA - Sch 10 MSS Type A Stub End**

Size in	Part Number		A in	B in	C in	D in	Weight lb
	304 / L	316 / L					
1/2	S2214MA004	S2216MA004	1.38	2.00	0.125	0.840	0.1
3/4	S2214MA006	S2216MA006	1.69	2.00	0.125	1.050	0.1
1	S2214MA010	S2216MA010	2.00	2.00	0.125	1.315	0.3
1-1/4	S2214MA012	S2216MA012	2.50	2.00	0.187	1.660	0.4
1-1/2	S2214MA014	S2216MA014	2.88	2.00	0.250	1.90	0.5
2	S2214MA020	S2216MA020	3.62	2.50	0.313	2.375	0.8
2-1/2	S2214MA024	S2216MA024	4.12	2.50	0.313	2.875	1.0
3	S2214MA030	S2216MA030	5.00	2.50	0.375	3.50	1.4
4	S2214MA040	S2216MA040	6.19	3.00	0.436	4.50	2.1
5	S2214MA050	S2216MA050	7.31	3.00	0.436	5.563	2.7
6	S2214MA060	S2216MA060	8.50	3.50	0.500	6.625	4.3
8	S2214MA080	S2216MA080	10.625	4.00	0.500	8.625	6.8
10	S2214MA100	S2216MA100	12.75	5.0	0.500	10.75	10.7
12	S2214MA120	S2216MA120	15.00	6.0	0.500	12.75	12.6



**Fig. S2214MC & S2216MC - Sch 10 MSS Type C Stub End**

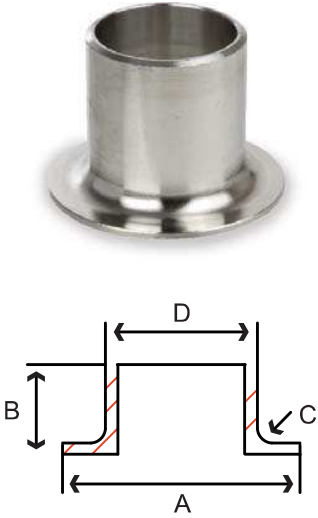
Size in	Part Number		A in	B in	C in	D in	Weight lb
	304 / L	316 / L					
1/2	S2214MC004	S2216MC004	1.38	2.00	0.031	0.840	0.1
3/4	S2214MC006	S2216MC006	1.69	2.00	0.031	1.050	0.1
1	S2214MC010	S2216MC010	2.00	2.00	0.031	1.315	0.3
1-1/4	S2214MC012	S2216MC012	2.50	2.00	0.031	1.660	0.4
1-1/2	S2214MC014	S2216MC014	2.88	2.00	0.031	1.90	0.5
2	S2214MC020	S2216MC020	3.62	2.50	0.031	2.375	0.8
2-1/2	S2214MC024	S2216MC024	4.12	2.50	0.031	2.875	1.0
3	S2214MC030	S2216MC030	5.00	2.50	0.031	3.50	1.4
4	S2214MC040	S2216MC040	6.19	3.00	0.063	4.50	2.1
5	S2214MC050	S2216MC050	7.31	3.00	0.063	5.563	2.7
6	S2214MC060	S2216MC060	8.50	3.50	0.063	6.625	4.3
8	S2214MC080	S2216MC080	10.625	4.00	0.063	8.625	6.8
10	S2214MC100	S2216MC100	12.75	5.0	0.063	10.75	10.7
12	S2214MC120	S2216MC120	15.00	6.0	0.063	12.75	12.6





## Stainless MSS Stub Ends - Sch 40

**Fig. S2244MA & S2246MA - Sch 40 MSS Type A Stub End**



Size in	Part Number		A in	B in	C in	D in	Weight lb
	304 / L	316 / L					
1/2	S2244MA004	S2246MA004	1.38	2.00	0.125	0.840	0.2
3/4	S2244MA006	S2246MA006	1.69	2.00	0.125	1.050	0.3
1	S2244MA010	S2246MA010	2.00	2.00	0.125	1.315	0.4
1-1/4	S2244MA012	S2246MA012	2.50	2.00	0.187	1.660	0.5
1-1/2	S2244MA014	S2246MA014	2.88	2.00	0.250	1.90	0.8
2	S2244MA020	S2246MA020	3.62	2.50	0.313	2.375	1.1
2-1/2	S2244MA024	S2246MA024	4.12	2.50	0.313	2.875	1.7
3	S2244MA030	S2246MA030	5.00	2.50	0.375	3.50	2.5
4	S2244MA040	S2246MA040	6.19	3.00	0.436	4.50	4.0
5	S2244MA050	S2246MA050	7.31	3.00	0.436	5.563	5.6
6	S2244MA060	S2246MA060	8.50	3.50	0.500	6.625	8.2
8	S2244MA080	S2246MA080	10.625	4.00	0.500	8.625	13.0
10	S2244MA100	S2246MA100	12.75	5.0	0.500	10.75	23.0
12	S2244MA120	S2246MA120	15.00	6.0	0.500	12.75	33.0

WELDED